

# 4000-01, 4000-02 & 4000-03 - (Old Style - Pre '95)

April, 1996

INDEX NO.	PART NO.	QTY. REQ.	DESCRIPTION
1	33638	1	Rubber Bumper
2	63780	2	Cap Screw
3	57620	1	Retainer Ring
4	58872	1	Teeth Ring (Spinning)
5	66336	1	Nozzle Tip
6	64000	2	Stop Screw
7	62060	1	Nozzle Stem Head 30 GPM (std)
8	57329	2	"O" Ring
9	57684	1	Truarc Ring
10	17106	1	Nozzle Body Tip
11	57420	1	"O" Ring
12	57337	1	"O" Ring
13	16910	1	Center Barrel
14	61783	1	Coil Spring
15	63581	1	Spacer
16	63404	1	Stem Base (Web)
17	57661	3	Split Ring
18	57387	1	"O" Ring
19	16893	1	Nozzle Body
20	57334	1	"O" Ring for Body
21	57327	1	"O" Ring for Adj. Seat
22	61357	1	Adjustable Seat
23	16941	1	Shutoff Body (Double Stop)
24	61269	1	Set Screw
25	15076	1	Valve Ball
26	61475	1	Actuator Shaft
27	57298	1	"O" Ring for Act. Shaft
28	36274	1	Tab Handle (Double Stop)
29	63701	1	Handle Pivot Screw
30	57348	1	"O" Ring for Handle Screw
31	61282	1	Act. Shaft Screw
32	51068	1	Drive Pin
33	57309	1	"O" Ring for Base Adapter
34	11607 *	1	F/S Base Adapter
35	57336 *	1	"O" Ring
36	15018 *	23	.187 Diam. S/S Ball
37	16760 *	1	1" Free Swivel Base
38	33091 *	1	Rubber Gasket
39	15429 **	1	1" Rigid Base
40	63675 *	1	F/S Set Screw
44245		1	Caution Label

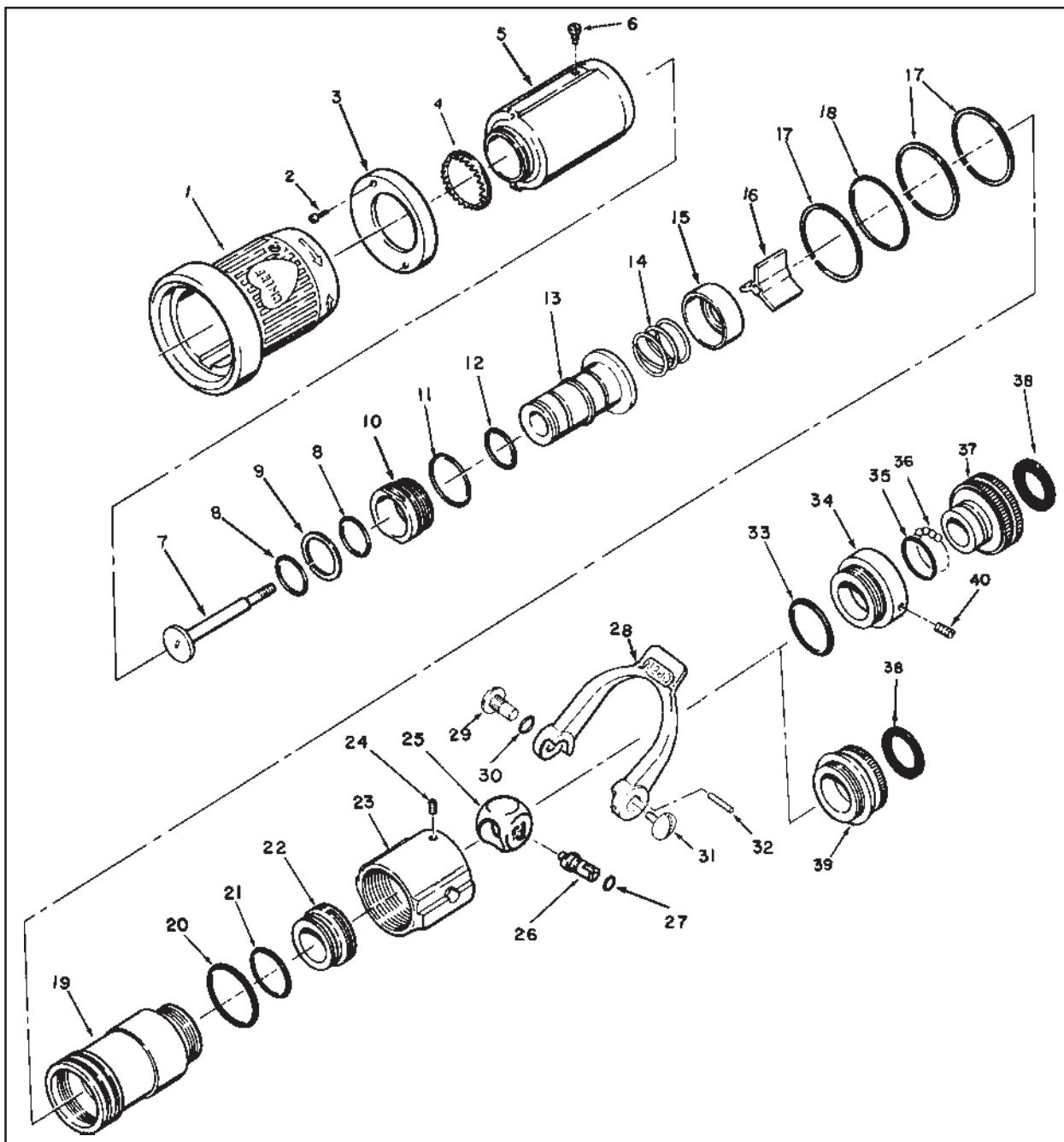
### OPTIONAL STEM HEADS

7	62059	1	Stem Head (15 GPM)
7	62061	1	Stem Head (45 GPM)
7	62062	1	Stem Head (60 GPM)

\* Standard Free Swivel Base Parts (4000-02)

\*\* Optional Rigid Base Parts (4000-01)

**Note:** For Pistol Grip Base Parts refer to separate sheet.



# 4000-10, 4000-11, 4000-12 & 4000-13 - (Old Style - Pre '95)

April, 1996

INDEX NO.	PART NO.	QTY. REQ.	DESCRIPTION
1	33638	1	Rubber Bumper
2	63780	3	Cap Screw
3	57618	1	Retainer Ring
4	58870	1	Teeth Ring (Spinning)
5	66332	1	Nozzle Tip
6	64000	2	Stop Screw
7	62049	1	Nozzle Stem Head 95 GPM (std)
8	57330	1	"O" Ring
9	16906	1	Center Barrel
10	57327	1	"O" Ring
11	57389	1	"O" Ring
12	57420	1	"O" Ring
13	16894	1	Nozzle Body Tip
14	57683	1	Truarc Ring
15	61783	1	Coil Spring
16	63581	1	Spacer
17	63404	1	Stem Base (Web)
18	57661	2	Split Ring
19	57387	1	"O" Ring
20	16893	1	Nozzle Body
21	57334	1	"O" Ring for Body
22	57327	1	"O" Ring for Adj. Seat
23	61357	1	Adjustable Seat
24	16941	1	Shutoff Body (Double Stop)
25	61269	1	Set Screw
26	15076	1	Valve Ball
27	61475	1	Actuator Shaft
28	57298	1	"O" Ring for Act. Shaft
29	63701	1	Handle Pivot Screw
30	57348	1	"O" Ring for Handle Screw
31	36083	1	Horseshoe Handle (Double Stop)
32	51068	1	Drive Pin
33	61282	1	Act. Shaft Screw
34	57309	1	"O" Ring for Base Adapter
35	15428 *	1	1.5" Rigid Base
36	33074 **	1	Rubber Gasket
37	11606 **	1	B/G Base Adapter
38	15018 **	32	.187" Diam. S/S Ball
39	63674 **	1	Swivel Set Screw
40	63068 **	1	1.5" R/L Swivel
41	11607 †	1	F/S Base Adapter
42	63675 †	1	F/S Set Screw
43	57336 †	1	"O" Ring
44	15018 †	23	.187 Diam. S/S Ball
45	16762 †	1	1.5" R/LFree Swivel Base
44245 †		1	Caution Label

### OPTIONAL STEM HEADS

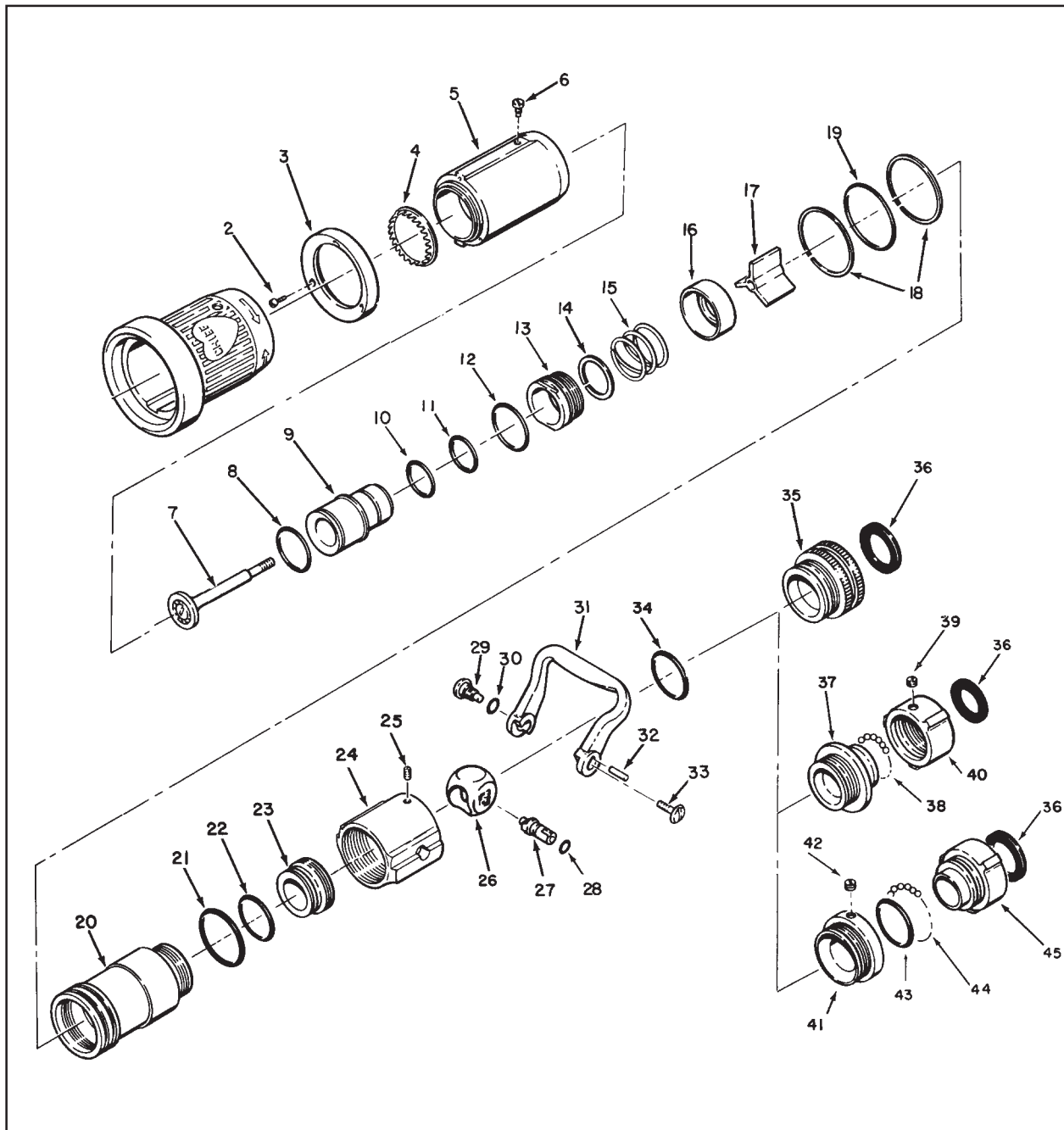
7	60047	1	Stem Head (60 GPM)
7	62050	1	Stem Head (125 GPM)
7	62051	1	Stem Head (150 GPM)
7	62089	1	Stem Head (150 GPM @ 75 PSI)

\* Optional Rigid Base Parts (4000-11)

\*\* Standard Swivel Base Parts (4000-10)

† Optional Free Swivel Base Parts (4000-12)

**Note:** For Pistol Grip Base Parts refer to separate sheet.



# 4000-20, 4000-21, 4000-23 & 4000-26 - (Old Style - Pre '95)

April, 1996

INDEX NO.	PART NO.	QTY. REQ.	DESCRIPTION
1	33639	1	Rubber Bumper
2	63780	4	Cap Screw
3	57619	1	Retainer Ring
4	58875	1	Teeth Ring (Spinning)
5	66333	1	Nozzle Tip
6	64000	2	Stop Screw
7	62052	1	Nozzle Stem Head 250 GPM (std)
8	57383	2	"O" Ring
9	16907	1	Center Barrel
10	57430	2	"O" Ring
11	16899	1	Nozzle Body Tip
12	57689	1	Truarc Ring
13	61786	1	Coil Spring
14	63586	1	Spacer
15	63404	1	Stem Base (Web)
16	57662	2	Split Ring
17	33247	1	Rubber Gasket
18	16898	1	Nozzle Body
19	57387	1	"O" Ring for Body
20	57330	1	"O" Ring for Adj. Seat
21	61358	1	Adjustable Seat
22	16794	1	Shutoff Body (Double Stop)
23	61269	1	Set Screw
24	17304	1	Valve Ball
25	61475	1	Actuator Shaft
26	57298	1	"O" Ring for Act. Shaft
27	63701	1	Handle Pivot Screw
28	57348	1	"O" Ring for Handle Screw
29	36079	1	Horseshoe Handle (Double Stop)
30	51068	1	Drive Pin
31	61282	1	Act. Shaft Screw
32	57310 *	1	"O" Ring for Base Adapter
33	10022 *	1	B/G Base Adapter
34	15018 *	32	.187" Diam. S/S Ball
35	63068 *	1	1.5" R/L Swivel
36	63674 *	1	Swivel Set Screw
37	33074 *	1	Swivel Gasket
38	15623 **	1	Base Adapter
39	15018 **	52	.187" Diam. S/S Ball
40	63069 **	1	2.5" R/L Swivel
41	63674 **	1	Swivel Set Screw
42	33083 **	1	Swivel Gasket
43	15432 †	1	1.5" Rigid Base
44245			Caution Label

### OPTIONAL STEM HEADS

7	62053	1	Nozzle Stem Head (325 GPM)
7	62054	1	Nozzle Stem Head (175 GPM)

- \* Standard Swivel Base Parts (4000-20)
- \*\* Direct Connect Swivel Base Parts (4000-26)
- † Optional Rigid Base Parts (4000-21)

**Note:** For Pistol Grip Base Parts refer to separate sheet.

