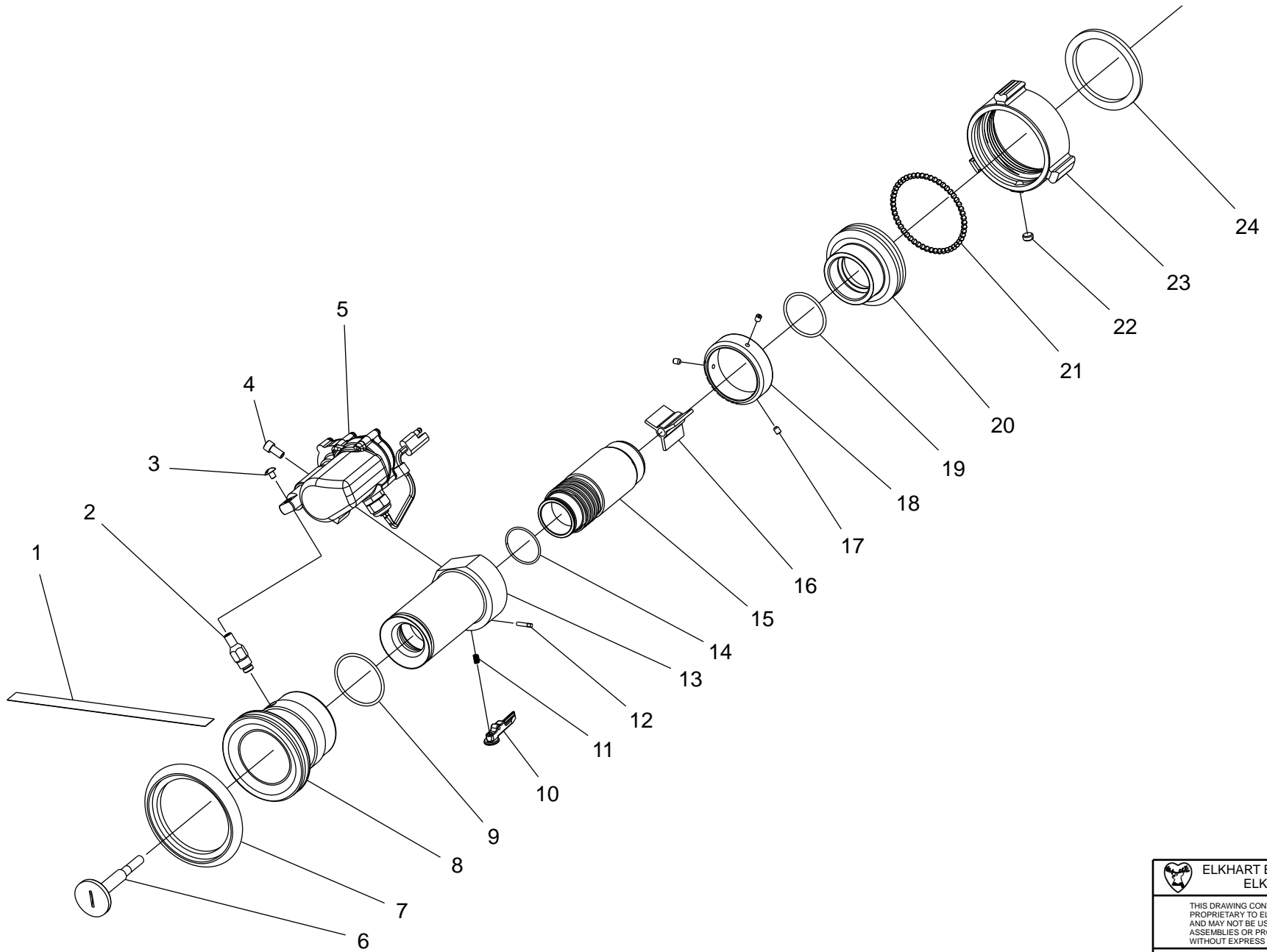




**6000 SERIES
(6000-200E)**



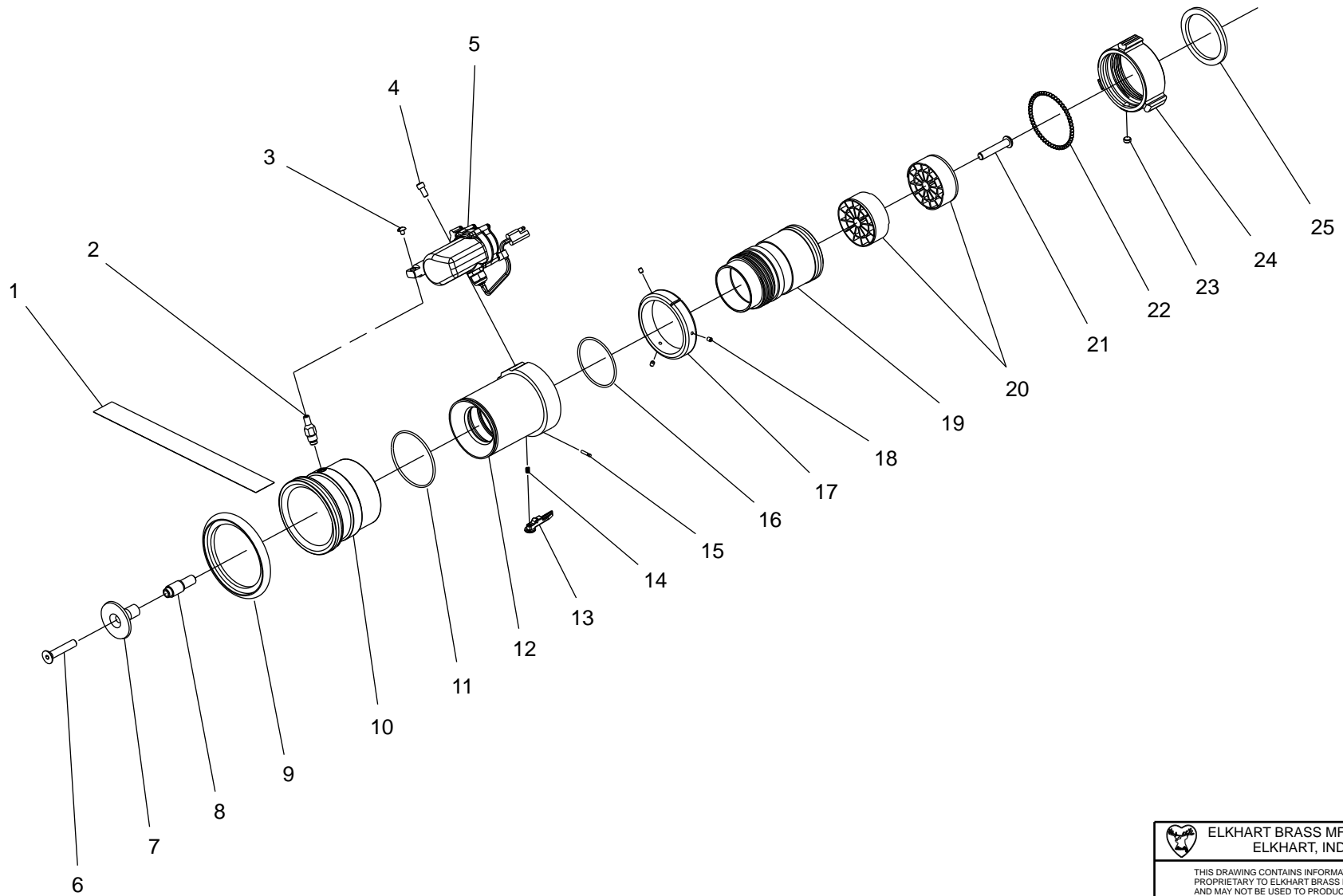
	ELKHART BRASS MFG. CO., INC. ELKHART, INDIANA
THIS DRAWING CONTAINS INFORMATION THAT IS PROPRIETARY TO ELKHART BRASS MFG. CO., INC. AND MAY NOT BE USED TO PRODUCE ANY PARTS, ASSEMBLIES OR PRODUCTS DESCRIBED HEREIN WITHOUT EXPRESS WRITTEN PERMISSION.	
6000-200E PAGE 1 OF 2 10/2009	PARTS LIST


6000 SERIES
(6000-200E)

INDEX NO.	PART NO.	QTY	DESCRIPTION
1	44618000	1	Label
2	17729001	1	Push Rod Bracket
3	61078000	1	Screw S/S
4	61040000	1	Socket Cap Screw S/S
5	81197001	1	Nozzle Actuator 12V
6	69076007	1	Nozzle Stem
7	16575310	1	Bumper
8	66432007	1	Nozzle Tip
9	57319000	1	O-Ring
10	44064105	1	Locking Lever
11	61762000	1	Coil Spring
12	51063000	1	Drive Pin S/S
13	18117007	1	Center Barrel
14	57521000	1	O-Ring
15	17196007	1	Nozzle Body
16	63418001	1	Stem (Web) Base
17	63678000	3	Set Screw S/S
18	59185007	1	Gallonge Ring
19	57297000	1	O-Ring
20	10350007	1	2.5 O/BG Adapter
21	15018000	52	0.187 Ball Bearings S/S
22	63674000	1	Set Screw Nylon
23	63069007	1	Swivel (2.5")
24	33083000	1	Gasket - Rubber

	ELKHART BRASS MFG. CO., INC. ELKHART, INDIANA
<small>THIS DRAWING CONTAINS INFORMATION THAT IS PROPRIETARY TO ELKHART BRASS MFG. CO., INC. AND MAY NOT BE USED TO PRODUCE ANY PARTS, ASSEMBLIES OR PRODUCTS DESCRIBED HEREIN WITHOUT EXPRESS WRITTEN PERMISSION.</small>	
<small>6000-200E PAGE 2 OF 2 10/2009</small>	<small>PARTS LIST</small>


6000 SERIES
(6000-700E)



	ELKHART BRASS MFG. CO., INC. ELKHART, INDIANA
THIS DRAWING CONTAINS INFORMATION THAT IS PROPRIETARY TO ELKHART BRASS MFG. CO., INC. AND MAY NOT BE USED TO PRODUCE ANY PARTS, ASSEMBLIES OR PRODUCTS DESCRIBED HEREIN WITHOUT EXPRESS WRITTEN PERMISSION.	
6000-700E PAGE 1 OF 2 10/2009	PART DRAWING

**6000 SERIES
(6000-700E)**

INDEX NO.	PART NO.	QTY	DESCRIPTION
1	44619000	1	Label
2	17729001	1	Push Rod Bracket
3	61078000	1	Screw S/S
4	61040000	1	Socket Cap Screw S/S
5	81186001	1	Nozzle Actuator 12V
6	61120000	1	Flat Hd Cap Screw S/S
7	69043001	1	Nozzle Stem Head
8	62214001	1	Nozzle Stem Shaft
9	16574310	1	Bumper
10	66431007	1	Nozzle Tip
11	57490000	1	O-Ring
12	18116007	1	Center Barrel
13	44064105	1	Locking Lever
14	61762000	1	Coil Spring
15	51063000	1	Drive Pin S/S
16	57339000	1	O-Ring
17	59184007	1	Gallorage Ring
18	63678000	3	Set Screw S/S
19	17195007	1	Nozzle Body
20	63431001	2	Stem (SS) Base
21	61126000	1	Button Hd Cap Screw S/S
22	15018000	52	0.187 Ball Bearings S/S
23	63674000	1	Set Screw Nylon
24	63069007	1	Swivel (2.5")
25	33083000	1	Gasket - Rubber

	ELKHART BRASS MFG. CO., INC. ELKHART, INDIANA
THIS DRAWING CONTAINS INFORMATION THAT IS PROPRIETARY TO ELKHART BRASS MFG. CO., INC. AND MAY NOT BE USED TO PRODUCE ANY PARTS, ASSEMBLIES OR PRODUCTS DESCRIBED HEREIN WITHOUT EXPRESS WRITTEN PERMISSION.	
6000-700E PAGE 2 OF 2 10/2009	PART DRAWING