

Universal Seal Replacement Kit

For Elkhart Brass and Akron Brass Apparatus Valves

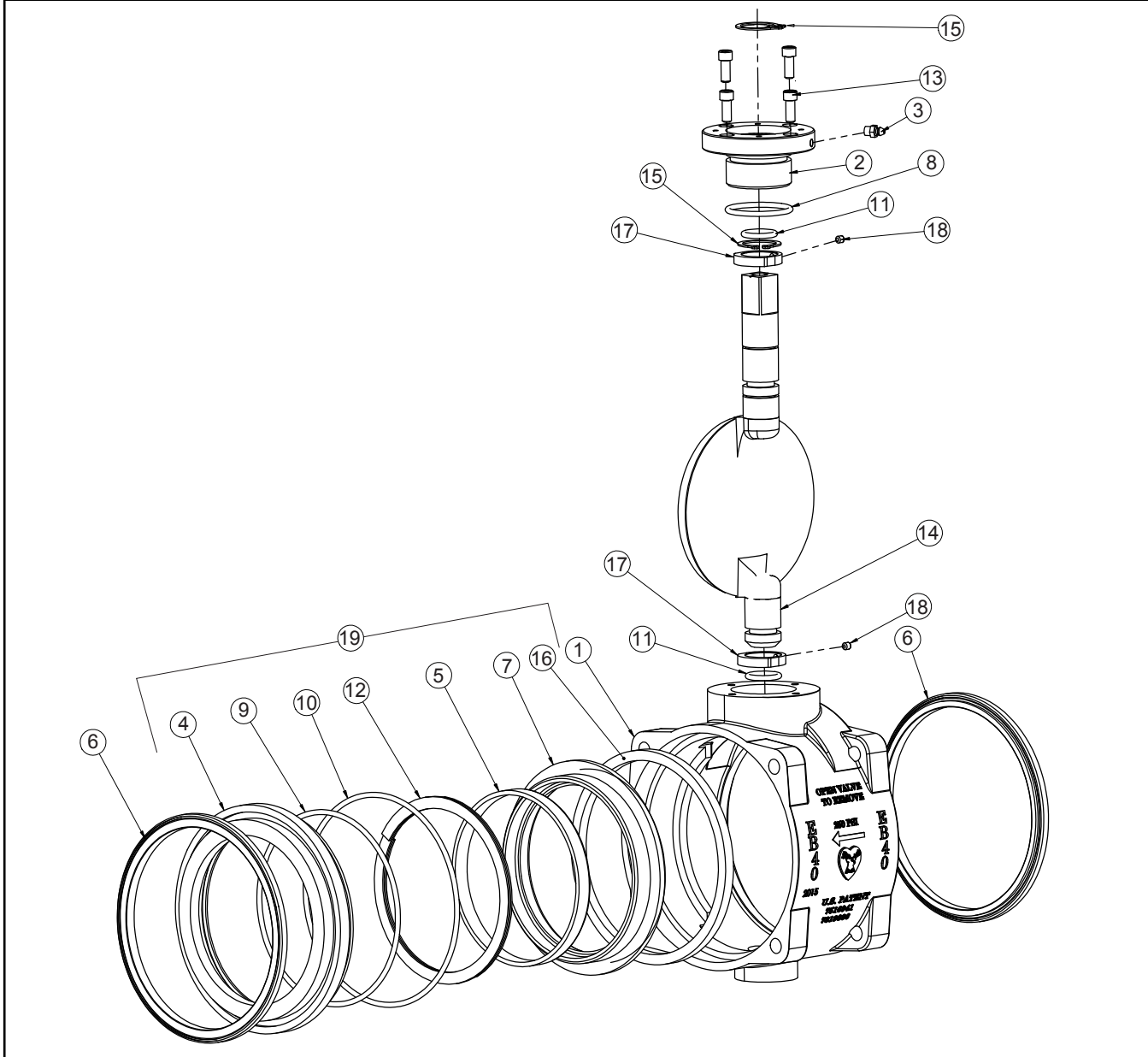
Part Number	Fits Elkhart Brass Unibody Valve Series	Fits Akron Brass Series
65476000	EB15/EB20	8620/8820 7620/7820
65478000	EB25	8625/8825 7625/7825
65480000	EB30/EB35	8630/8830/8635/8835 7630/7830/7635/7835
65482000	EB40	8840
65986000	EB40 (2015)	-

This service kit includes the parts required to replace the valve seat, the seat retaining ring O-rings and the adapter seals of either an Elkhart Brass Unibody series valve or an Akron Brass 8800 series valve.



ELKHART BRASS MFG. CO., INC.
 1302 West Beardsley Avenue • Elkhart, IN 46514
 (800) 346-0250 • (574) 295-8330

4" Valve Detail – Elkhart EB40 (2015)



ITEM	DESCRIPTION	PART NUMBER	ITEM	DESCRIPTION	PART NUMBER
1	EB40 Body	17768001	10	O-Ring 5.734	57453000
2	Adapter - Gear Case	11733000	11	O-Ring .734	57459000
3	Fitting - Grease	32134000	12	Spring - Wave	61802000
4	Seat Retainer	58910000	13	Screw - Cap SS	61041000
5	Seat Ring	59172000	14	Clapper - Butterfly (2015)	20513001
6	Face Seal	65016000	15	Ring - Retaining	58953000
7	Seat - Valve (2015)	65024000	16	CAM - Follower	44413000
8	O-Ring 1.609	57317000	17	CAM - EB40 (2015)	44412000
9	O-Ring 5.234	57423000	18	Set Screw	65235000
			19	Seat Assembly	-

I. DISASSEMBLY

1. Turn the valve to the closed position.
2. If the valve can be rotated out of line, remove three pairs of adapter bolts and loosen the fourth pair. Swing the valve out of the line. If the valve cannot be rotated out of line, remove all eight adapter bolts and take the valve out completely.

NOTE: 4" Valves are directional. Note the orientation of the arrow on the side of the valve body indicating flow direction.

3. Remove and discard both adapter face seals (6).
4. Partially open the valve to allow access to the seat assembly (19).
5. To access and remove #8 & #11 O-rings on valve clapper assembly (14), first remove the #15 retaining ring and then the four #13 cap screws. To remove the adapter, carefully pry the #2 adapter up & out by placing a flat tool (large adjustable wrench or pry bar) under the grease fitting to lift it out.
6. Next, remove the #14 clapper assembly from the lower O-ring boss so that it is free to move and to allow enough clearance to access both O-rings for replacement. If necessary, the clapper assembly can be fully removed from the #1 valve body. To do this, carefully move the clapper towards the upper adapter boss until it stops. NOTE: Due to limited clearance, the valve can only be removed by rotating the valve so that the flat face is oriented opposite from the flow arrow head (cast on #1 valve body exterior).
7. When the valve's flat face is oriented farthest away from the arrow head, grasp the lower pivot and carefully lift valve assembly out of the valve body, being careful not to damage any seal surfaces.
8. Pull the entire seat assembly (19) out from the valve body.
9. Discard the valve seat (7), retaining ring inner O-ring (9) and retaining ring outer O-ring (10).

II. INSPECTION AND CLEAN-UP

1. Use a 10" or larger flat file to clean up the flat surface of the adapters and mating surfaces of the valve body. Remove any paint, corrosion or raised lip around the bolt holes.
2. Inspect the condition of the flat ball for burrs, nicks, and sharp edges caused by debris. If found, carefully use fine emory paper to remove any condition which might cut the valve seat or otherwise impair sealing.

CAUTION: Completely remove any grit or debris from the valve body before assembly.

III. REASSEMBLY

NOTE: Lubricate O-rings with Parker O-ring Lube or equivalent petroleum-based lubricant.

1. Install the new inner O-ring (9) and outer O-ring (10) on the retaining ring (4).
2. Install new O-rings #8 & #11 on the valve assembly by following DISASSEMBLY steps 5-7 in reverse order.
2. Reinsert the seat spring (12) into the cavity of the retaining ring (4).
3. Insert the seat support ring (5) into the new valve seat (7) with the chamfered edge to the inside of the seat.
4. Insert seat into the seat retaining ring (4).
5. Replace the entire assembly (19) into the valve body.
6. Insert the two new adapter face seals (6) into the valve body.
7. Slide valve back into waterway. Check that the valve is oriented in the closed position (valve is resting against the (7) seat).

NOTE: 4" Valves are directional. Note the orientation of the arrows on the side of the valve body indicating flow direction.

CAUTION: The ball must be in the closed position before each endcap (not shown) is fastened.

8. Tighten the endcap bolts gradually using an X pattern in 20 ft-lb increments until 60-70 ft-lbs of torque is reached.
DO NOT OVER TIGHTEN

MAINTENANCE INSTRUCTIONS

Do not lubricate the ball or seats. Lubricants can collect dirt and grit which may cause excessive wear. Occasionally flow water through all valves to clear dirt and debris.

OPERATING INSTRUCTIONS

Always open and close valves slowly. Do not exceed 500 psi.

DISCLAIMER: Any reference herein to other manufacturers' names and/or their trademarks is used only for comparison purposes or to indicate compatibility and is not in any way intended to indicate an association or affiliation with or sponsorship or approval by that manufacturer.